

SUBURBAN 2021

CHEVROLET 



Suburban High Country in
Midnight Blue Metallic.



IT'S EVERYTHING FOR EVERYONE.

Reimagined everywhere that matters, the most versatile and advanced Suburban ever fits perfectly in your world. The longest-selling full-size SUV is more spacious, with increased second- and third-row leg room and up to 144.7 cu. ft. of maximum cargo volume.¹ It's forward-thinking, with available features like an innovative Rear-Seat Media System and a Power Sliding Center Console. And it's capable in the real world, with an available Four-Corner Air Ride Adaptive Suspension and three available powertrains.² Add in a combination of more than 25 standard and available safety features and driver assistance technologies,³ plus the type of interior luxury only the All-New Suburban can deliver, and you'll see it isn't just bigger. It's life-sized.

FIND NEW ROADS™

¹ With second- and third-row seats folded flat. Cargo and load capacity limited by weight and distribution. ² Duramax 3.0L Turbo-Diesel I-6 engine is late availability. ³ Read the vehicle Owner's Manual for important feature limitations and information.

MODELS

LS

You'll be surprised by everything that's in LS.

A sculpted exterior is highlighted by chrome trim accents and 18-inch bright Silver-painted aluminum wheels. The legendary 5.3L EcoTec3 V8 engine propels LS, whether you choose 2WD or 4WD.

Inside, a leather-wrapped steering wheel and 10-way power seat greet the driver, and all passengers enjoy plenty of room to stretch out, along with amenities such as a 10.2-inch diagonal HD color touch-screen that delivers information and entertainment.



LT

Comfort and convenience are LT hallmarks.

Leather seating surfaces are standard for the driver and front passenger, who also experience the customization of 10-way power seat adjustment and the warmth of heated cushions and seatbacks.

LT upgrades include a hands-free programmable power liftgate with Chevrolet emblem projection, wireless charging¹, a 9-speaker Bose stereo system, an auto-dimming inside rearview mirror and a Universal Home Remote.



¹ The system wirelessly charges one compatible mobile device. Some phones have built-in wireless charging technology and others require a special adaptor/back cover. To check for phone or other device compatibility, see my.chevrolet.com/learn or consult your carrier.

MODELS

RST

There's always one family member that demands the most attention.

RST takes that role, with a unique Black sport grille, Black Ice chrome exterior trim and Black Chevrolet bowtie emblems. Adding to the appearance are high-gloss Black 22-inch bright machined-aluminum wheels.

The interior also leaves a lasting impression, with RST-specific Jet Black leather seating surfaces¹ highlighted with Victory Red stitching.

¹ Leather seating surfaces in front and second rows; third row is vinyl-covered.



MODELS

Z71

Leave the world behind. Take everything with you.

Paved roads are an afterthought with standard 4WD and a high approach angle front fascia that help optimize off-road capability, plus an available Four-Corner Air Ride Adaptive Suspension. A front skid plate helps protect the underside on the trails, and a heavy-duty air filter helps keep the engine running smoothly. Tubular assist steps, 20-inch machined-aluminum wheels with all-terrain tires and Red recovery hooks¹ are just a few of the features you'll find only on Z71.

PREMIER

We've proved "too much of a good thing" is a myth.

From 20-inch polished-finish aluminum wheels to full-feature power-folding outside mirrors, enhancements are everywhere. A smooth ride is a near certainty with Magnetic Ride Control™ suspension, and you'll enjoy the confidence of numerous advanced safety features.

Inside, heated and ventilated front bucket seats with perforated leather seating surfaces² await, along with power-release heated second-row bucket seats and a power-folding third row. There's also a Bose Centerpoint Surround Sound 10-speaker system.



¹ To avoid the risk of injury, never use recovery hooks to tow a vehicle. See the Owner's Manual for more information. ² Leather seating surfaces in front and second rows; third row is vinyl-covered.

MODELS

HIGH COUNTRY

When you think you've reached the top, keep climbing.

High Country starts with the lofty standards set by Premier, and then keeps heading to the mountain peak. Take the standard 6.2L EcoTec3 V8 engine, the exclusive grille with Galvano finish and Godric accents, and the 22-inch Sterling Silver-painted wheels with chrome inserts as just a few examples.

Adding Rear Pedestrian Alert¹ and HD Surround Vision¹ takes Suburban High Country to new heights, as do the standard 15-inch diagonal multi-color Head-Up Display and Rear Camera Mirror¹ with full camera display.



¹ Read the vehicle Owner's Manual for important feature limitations and information.



INTERIOR DESIGN

EXPERIENCE LIFE IN FIRST CLASS.

Suburban High Country interior in Jet Black with heated and ventilated front bucket seats with perforated leather seating surfaces.

Through the use of varied seating materials, colors, stitching, door inserts and more, **each Suburban is distinct**, providing a different interior experience depending on the trim you select.

Everything is intelligently designed and logically placed, including the easy-to-navigate **10.2-inch diagonal**

HD color touch-screen and new premium Electronic Precision Shift Transmission located on the instrument panel.

Luxury begins with the leather-wrapped steering wheel. **Perforated leather seating surfaces in the front and second row** and heated front seats are added to LT and above.

Premier and High Country elevate your experience with the addition of **ventilated front seats** for comfort in any climate, as well as a heated steering wheel and heated second-row outboard seats.

Auto Temp, standard on Premier and High Country, automatically activates the heated or ventilated seats to the

level required by the vehicle's interior temperature setting. It will even begin warming your heated steering wheel.

Front-seat passengers will have **intelligent storage solutions** at their disposal, including a cubby next to the touch-screen display that's perfect for sunglasses, a mobile device or other small items.

INTERIOR CAPABILITY

AS BIG AS YOUR IMAGINATION.

Suburban is designed to let the light shine in. With an available new **panoramic power sunroof**, lower beltlines and optimized mirror designs, you can enjoy open spaces, even when you're inside.

Manual second-row seats can slide back and forth up to 5.5 inches, so you can maximize leg room or rear cargo room. They also make it easier to secure child restraints.

Compared to the previous generation, the 2021 Suburban offers over **2 inches more second- and third-row leg room** and greater cargo volume behind the third row.

Second- and third-row passengers will find **accessible storage spaces**, convenient cup holders and multiple USB ports! Also included are two 110-volt household-type power outlets.

¹ Not compatible with all devices.

Optimized third-row seating position provides excellent sight lines.

Easy access with fold-and-tumble second-row seats.

Third-row passengers will enjoy plenty of leg room.



CARGO MANAGEMENT

OPEN UP A WORLD OF POSSIBILITIES.

With a cavernous **144.7 cu. ft. of maximum cargo space**¹;² there's no telling just how much adventure you can pack in. There's even 41.5 cu. ft. of space behind the third row²

You can easily switch from passenger space to cargo space and back again with **power-release second-row seats and power-folding third-row seats**. Standard on Premier and High Country; available on LT, RST and Z71.

Large rear door openings combine with fold-and-tumble second-row seats to provide **easier entry and exit for third-row passengers**. The second row folds flat and close to the floor for enhanced usability and cargo space.

When you push and hold the button, the available **Power Sliding Center Console** slides rearward up to 10 inches, offering an expansive storage area, as well as a hidden storage drawer that can be secured when Valet mode is selected.

¹ With second- and third-row seats folded flat. ² Cargo and load capacity limited by weight and distribution.

Seating for seven (shown), eight or even up to nine passengers on LS.

Easily configurable for passengers, cargo or both.

Suburban offers 144.7 cu. ft. of maximum cargo volume^{1,2}



¹ With second- and third-row seats folded flat. ² Cargo and load capacity limited by weight and distribution.

PERFORMANCE

Suburban High Country
in Midnight Blue Metallic
with available features.

WE PUT POWER AT A PREMIUM.

5.3L ECOTEC3 V8	10-SPEED TRANSMISSION	DYNAMIC FUEL MANAGEMENT	355 HP @ 5600 RPM	383 LB.-FT. OF TORQUE @ 4100 RPM	8,300 LBS. MAX TOWING CAPABILITY ^{1,2}	16 MPG CITY/ 20 HIGHWAY ³
6.2L ECOTEC3 V8	10-SPEED TRANSMISSION	DYNAMIC FUEL MANAGEMENT	420 HP @ 5600 RPM	460 LB.-FT. OF TORQUE @ 4100 RPM	8,200 LBS. MAX TOWING CAPABILITY ^{1,2}	15 MPG CITY/ 20 HIGHWAY ⁴
DURAMAX 3.0L TURBO-DIESEL I-6⁵	10-SPEED TRANSMISSION	DIESEL EXHAUST BRAKE SYSTEM	277 HP @ 3750 RPM	460 LB.-FT. OF TORQUE @ 1500 RPM	8,000 LBS. MAX TOWING CAPABILITY ¹	NOT AVAILABLE AT TIME OF PRINTING

¹ Requires 2WD. Before you buy a vehicle or use it for trailering, carefully review the Trailering section of the Owner's Manual. The weight of passengers, cargo and options or accessories may reduce the amount you can tow. ² Requires available Max Trailering Package. ³ EPA estimated 2WD. EPA-estimated MPG city/highway: 16/20 (2WD), 15/19 (4WD). ⁴ EPA estimated 2WD. EPA-estimated MPG city/highway: 15/20 (2WD), 14/19 (4WD). ⁵ Late availability. ⁶ Excludes other GM vehicles. ⁷ EPA-estimated MPG city/highway: 5.3L EcoTec3 V8 16/20 (2WD), 15/19 (4WD); 6.2L EcoTec3 V8 15/20 (2WD), 14/19 (4WD).

The GM-exclusive⁶ available Duramax[®] 3.0L Turbo-Diesel I-6 (late availability) offers 277 horsepower and 460 lb.-ft. of torque. The 5.3L EcoTec3 V8 provides 355 horsepower and 383 lb.-ft. of

torque, while the available 6.2L EcoTec3 V8 generates 420 horsepower and 460 lb.-ft. of torque. A 10-speed automatic transmission with Electronic Precision Shift is standard.

Dynamic Fuel Management is included on both the 5.3L and 6.2L EcoTec3 gas engines. A sophisticated control system continuously monitors every movement of the accelerator pedal and calculates exactly how much torque is needed to

handle the current driving condition. Nearly instantaneously, the system activates or deactivates cylinders in an industry-first 17 different patterns to help maximize fuel economy⁷ and create the power needed.

RIDE COMFORT

Suburban Z71 in Satin Steel Metallic
with available features.



RULE EVERY ROAD. EVEN THE OFF-ROAD.

Suburban has an exceptionally advanced suspension, including an available **Four-Corner Air Ride Adaptive Suspension**. It utilizes four variable-rate air springs to optimize ride height and comfort.

In addition, this suspension provides selectable and automated ride height options to improve ground clearance, ease passenger entry/exit and optimize aerodynamic performance. Available on Z71 and High Country.

The **independent multilink rear suspension** allows each rear wheel to handle road conditions separately to dramatically improve ride quality and steering responsiveness.

The **Driver Mode Selector** allows you to choose different drive modes that alter the transmission shifts, throttle and traction systems to better handle varying road conditions. System functionality varies by model.

Choose Off-Road, available on 4WD models, via the Driver Mode Selector and the available Four-Corner Air Ride Adaptive Suspension will automatically raise the vehicle to improve ground clearance!¹

Select ride height for the available Four-Corner Air Ride Adaptive Suspension on the 8-inch diagonal enhanced Driver Information Center.

The independent rear suspension can be paired with available Magnetic Ride Control² and Four-Corner Air Ride Adaptive Suspension.



¹ Requires available 4WD. ² Standard on Premier and High Country; available on Z71.

TECHNICALLY ADVANCED.

- The Chevrolet Infotainment 3 system¹ is intuitive and easy to use, with a 10.2-inch diagonal HD color touch-screen display.
- Wireless Apple CarPlay² and wireless Android Auto³ compatibility.
- Wireless charging⁴ and up to eight USB ports⁵, including both Type-A and Type-C.
- Available 4G LTE Wi-Fi⁶ provides a fast and reliable connection for up to seven devices.
- With available Alexa Built-In⁷, you can use voice commands to stream your favorite music, get directions, make calls, change your radio station and more — on the go.

1 Chevrolet Infotainment System functionality varies by model. Full functionality requires compatible Bluetooth and smartphone, and USB connectivity for some devices. 2 Vehicle user interface is a product of Apple and its terms and privacy statements apply. Requires compatible iPhone and data plan rates apply. 3 Vehicle user interface is a product of Google and its terms and privacy statements apply. Requires the Android Auto app on Google Play and a compatible Android smartphone. Data plan rates apply. You can check which smartphones are compatible at g.co/androidauto/requirements. 4 The system wirelessly charges one compatible mobile device. Some phones have built-in wireless charging technology and others require a special adaptor/back cover. To check for phone or other device compatibility, see my.chevrolet.com/learn or consult your carrier. 5 Not compatible with all devices. 6 Service varies with conditions and location. Requires active service and paid AT&T data plan. Visit onstar.com for details and limitations. Availability subject to change. 7 Functionality is subject to limitations and varies by vehicle, infotainment system and location. Select service plan required. Certain Alexa Skills require account linking to use. Visit onstar.com for additional details.

Apple CarPlay is a trademark of Apple Inc. Siri, iPhone and Apple Music are trademarks of Apple Inc., registered in the U.S. and other countries. Android Auto is a trademark of Google LLC.

15-inch diagonal multi-color Head-Up Display.
Standard on High Country and available on Premier.

An Advanced Trailering System with in-vehicle app¹ is available.

Available Rear-Seat Media System with dual
12.6-inch diagonal LCD HD color touch-screen displays.



¹ App functionality and features vary with vehicle equipment and trim level. Data connection may be required. Some features require active service plan and working electrical system. Terms and conditions apply.

CAMERA TECHNOLOGIES



Rear Camera Mirror An available dual-function camera-based rearview mirror provides a wider, less-obstructed field of view than a traditional rearview mirror.



Surround View Gives a top-down bird's-eye view of the vehicle's surroundings.



Front Camera View Displays a front view with available guidelines to assist with parking and tight maneuvers.

TAKE A LOOK AROUND.

The 2021 Suburban offers up to **nine available camera views** to help make it easier to pull into tight spaces, back into a garage or hitch a trailer – all while providing confidence when you drive.

Views enabled by these cameras are easily accessed by selecting the Camera App on the touch-screen display. Conveniently, certain views can be launched through the **Advanced Trailering System**.

Safety starts with you. Safety or driver assistance features are no substitute for the driver's responsibility to operate the vehicle in a safe manner. The driver should remain attentive to traffic, surroundings and road conditions at all times. Visibility, weather and road conditions may affect feature performance. Read the vehicle Owner's Manual for more important feature limitations and information.



Rear Camera View Displays a rear view to assist with parking and tight maneuvers.



Front Side View Shows the position of the front tires when parking and during tight maneuvers.



Front Top-Down View A top-down view of the hood, bumper and front tires for tight maneuvers in parking lots or along curbs.



Rear Side View Provides a line of sight down each side of the vehicle.



Rear Top-Down View Shows the clearance between the rear of the vehicle and nearby objects.



Hitch View Provides a close-up view of the receiver hitch to help with alignment when connecting to a trailer.

SAFETY AND DRIVER ASSISTANCE



Adaptive Cruise Control. While you steer, this feature can automatically maintain a driver-selected gap time from the detected vehicle you're following. Available on Premier and High Country.



Front Pedestrian Braking. At speeds below 50 mph, this feature can help you avoid or reduce the severity of a front-end collision with a pedestrian it detects directly in front of you. It provides pedestrian alerts and can even automatically provide hard emergency braking or enhance the driver's hard braking. Limited nighttime and low-visibility performance. Standard on all models.



Automatic Emergency Braking. At speeds below 50 mph, this feature works with Forward Collision Alert to help you avoid or reduce the severity of a front-end collision with a detected vehicle you're following by automatically providing hard emergency braking or enhancing the driver's hard braking. Standard on all models.



Enhanced Automatic Emergency Braking. This feature works with Forward Collision Alert to help you avoid or reduce the severity of a front-end collision with a detected vehicle you're following by automatically providing hard emergency braking or enhancing the driver's hard braking. Available on Premier and High Country.



Lane Keep Assist with Lane Departure Warning. Uses a brief, gentle steering wheel turn to alert you when you may be unintentionally drifting out of detected lane lines, so you can steer to stay safely in your lane. If needed, you may receive additional Lane Departure Warning alerts. System alerts do not occur if you are using your turn signal or it detects that you may be intentionally leaving your lane. Standard on Premier and High Country; available on all other models.



Lane Change Alert with Side Blind Zone Alert. This feature can provide side mirror visual alerts when a detected moving vehicle is quickly approaching or is in your side blind zone. Standard on Premier and High Country; available on all other models.



Rear Pedestrian Alert. Rear Pedestrian Alert can help alert you to detected pedestrians directly behind your vehicle so you can quickly take action. The system works when you're in Reverse during the daytime. It has limited nighttime and low-visibility performance. Standard on High Country; available on LT, RST, Z71 and Premier.



Forward Collision Alert. Can warn you if it detects a potential front-end collision with a vehicle you're following. It can also provide a tailgating alert if you're following much too closely. Standard on all models.



Following Distance Indicator. This feature can display the gap time in seconds between your vehicle and a detected vehicle. Standard on all models.



HD Rear Vision Camera. This standard feature provides an image of the area directly behind your vehicle when traveling in Reverse at low speeds.



Rear Cross Traffic Alert. This feature can warn you of detected left or right cross traffic behind your Tahoe when in Reverse. Standard on Premier and High Country; available on all other models.



Rear Camera Mirror. Rear Camera Mirror uses a camera to provide you with a wide and less obstructed view behind the vehicle while you're driving. You can switch between the camera view and a traditional rearview mirror. Standard on High Country; available on Premier.



Front and Rear Park Assist. Front and Rear Park Assist can provide distance alerts to nearby detected objects in front of or behind your vehicle to help you park and avoid collisions at low speeds. Standard on Premier and High Country; available on all other models.



IntelliBeam® Can automatically turn the vehicle's high beam headlights on and off according to surrounding traffic conditions. Standard on all models.

Available features shown.

Safety starts with you. Safety or driver assistance features are no substitute for the driver's responsibility to operate the vehicle in a safe manner. The driver should remain attentive to traffic, surroundings and road conditions at all times. Visibility, weather and road conditions may affect feature performance. Read the vehicle Owner's Manual for more important feature limitations and information.



**ENJOY EVERY JOURNEY.
AND EVERY DESTINATION.**



Suburban Premier in Iridescent
Pearl Tricoat (extra-cost color)
with available features.

ACCESSORIES



Black Front and Rear Bowtie Emblems from Chevrolet Accessories!



Black Exhaust Tip from Chevrolet Accessories!



Molded Splash Guards from Chevrolet Accessories!

TRUCK LEGENDS



Are you a legend? When you've been building an iconic SUV like Suburban for over 85 years like we have, something you learn is there's a story behind every one. And we want to hear yours. Chevy Truck Legends honors our dependable, long-lasting trucks and the people who keep them going strong. If you own an eligible Chevy truck and have purchased or leased more than one new Chevy truck in your lifetime or have driven one over 100,000 miles, you're a legend. At chevytrucklegends.com, discover the benefits that come with membership. Explore the galleries and read about the relationship owners have with their Chevy trucks.



EXTERIOR COLORS



Summit White



Iridescent Pearl Tricoat^{1,2}



Satin Steel Metallic



Shadow Gray Metallic



Graywood Metallic



Cherry Red Tintcoat¹



Empire Beige Metallic



Midnight Blue Metallic



Black

¹ Extra-cost color. ² Not available on LS.

STANDARD EQUIPMENT

Standard on every Suburban:

MECHANICAL

Air filter – with air filtration monitoring

Brakes – 4-wheel antilock, 4-wheel disc with Duralife® rotors; electronic parking brake

Cooling – external engine and transmission oil coolers

Differential – mechanical limited-slip

Driver Mode Selector – with Tow/Haul mode

StabiliTrak® – Electronic Stability Control System and Traction Control; includes Electronic Trailer Sway Control and Hill Start Assist

Steering – rack-and-pinion with electric assist

Trailer equipment – trailer hitch platform, 7-wire harness with independent fused trailering circuits mated to a 7-way sealed connector, 2-inch trailering receiver and Hitch Guidance¹

Transmission – 10-speed automatic, electronically controlled with overdrive and Electronic Precision Shift

EXTERIOR

Active aero shutters – upper

Daytime running lamps – LED

Fuel filler – capless fueling

Glass – solar-absorbing with acoustic-laminated windshield and deep-tinted rear windows

Headlamps – LED, automatic on/off with automatic delay

IntelliBeam – automatic high beam on/off

Taillamps – LED

Tire – 17" full-size spare, lockable, mounted under frame at rear

Wipers – front variable-speed, intermittent with Rainsense®; rear intermittent with washer

INTERIOR

Airbags² – frontal airbags for driver and front outboard passenger; seat-mounted side-impact airbags for driver and front outboard passenger; driver inboard seat-mounted side-impact airbag (requires front bucket seats on LS); head-curtain airbags for all rows in outboard seating positions; includes front outboard Passenger Sensing System for frontal outboard passenger airbag

Air conditioning – tri-zone automatic climate control, with individual climate settings for driver, right-front passenger and rear passengers

INTERIOR (CONTINUED)

Automatic Emergency Braking¹

Cargo area – Cargo Management System

Console – with storage area and removable storage tray

Cruise control – electronic with Set and Resume Speed

Defogger – electric rear-window

Door locks – power programmable with lockout protection and manual rear door child security

Floor mats – front and second-row carpeted

Following Distance Indicator¹

Forward Collision Alert¹

Front Pedestrian Braking¹

Keyless Open and Start – includes extended-range Remote Keyless Entry

Lighting – interior lighting with door handle or Remote Keyless Entry-activated illuminated entry, cargo area, and front and second-row reading lamps

Media – two USB ports³ on center stack, two USB ports³ and SD card reader in center console, two USB ports³ in second row on rear of center console, and two USB ports³ in third row

Power outlets – three, one 12-volt in center stack, one 120-volt on rear of center console and one 120-volt in cargo area

Rear Park Assist¹

Rear Seat Reminder⁴

HD Rear Vision Camera¹

Remote vehicle starter system

SiriusXM® with 360L⁵ – All Access Package with 3-month trial subscription

Steering wheel – leather-wrapped with mounted audio, cruise, phone and Driver Information Center controls

Teen Driver technology

Theft-deterrent system – unauthorized entry

Tire Pressure Monitoring System – with Tire Fill Alert (does not monitor spare tire)

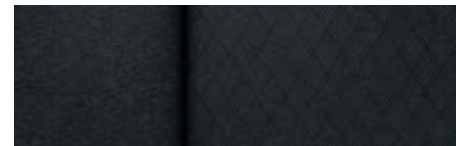
Visors – driver and front passenger, covered illuminated vanity mirrors, sliding

Windows – power with driver and front passenger express-up/-down, all others express-down

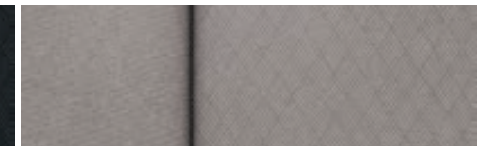
Wireless Apple CarPlay^{®6} and wireless Android Auto^{™7} compatibility

¹ Read the vehicle Owner's Manual for important feature limitations and information. ² A NOTE ON CHILD SAFETY: Always use seat belts and the correct child restraint for your child's age and size, even with airbags. Even in vehicles equipped with the Passenger Sensing System, children are safer when properly secured in a rear seat in the appropriate infant, child or booster seat. Never place a rear-facing infant restraint in the front seat of any vehicle equipped with an active frontal airbag. See your vehicle Owner's Manual and the child safety seat instructions for more safety information. ³ Not compatible with all devices. ⁴ Does not detect people or items. Always check rear seat before exiting. ⁵ If you decide to continue service after your trial, the subscription plan you choose will automatically renew thereafter and you will be charged according to your chosen payment method at then-current rates. Fees and taxes apply. See the SiriusXM Customer Agreement at siriusxm.com for complete terms and how to cancel. All fees, content, features and availability are subject to change. Certain features require a SiriusXM subscription and the Chevrolet Connected Access plan. See siriusxm.com and onstar.com for details and limitations. ⁶ Vehicle user interface is a product of Apple and its terms and privacy statements apply. Requires compatible iPhone and data plan rates apply. ⁷ Vehicle user interface is a product of Google and its terms and privacy statements apply. Requires the Android Auto app on Google Play and a compatible Android smartphone. Data plan rates apply. You can check which smartphones are compatible at g.co/androidauto/requirements.

MODELS



Jet Black Premium Cloth



Gideon Premium Cloth (shown)



18" Bright Silver-Painted Aluminum Wheels (PZX)
Standard on LS



20" Painted-Aluminum Wheels with
Machined Face and Argent Metallic Pockets (RD4)
Available on LS

LS In addition to standard equipment, Suburban LS includes these features:

MECHANICAL

Engine – 5.3L EcoTec3 V8 with Dynamic Fuel Management, Variable Valve Timing (VVT), Direct Injection and stop/start technology

Exhaust – single system with single outlet

Suspension – 4-wheel independent, Premium Smooth Ride

EXTERIOR

Assist steps – Black with chrome accent strip

Chevrolet bowtie emblems – Gold

Door handles – body-color

Fascia – front lower, Black with bright chrome accent trim

Grille – Black mesh with bright chrome center bar

Liftgate – manual

Liftgate accents – chrome

Liftgate appliqué – bright chrome finish

Mirror caps – body-color

Mirrors – heated, power-adjustable, manual-folding

Moldings – stainless steel, window beltline

Roof rails – bright

Tires – 18" all-season

INTERIOR

Audio – 6-speaker system

Driver Information Center – 4.2-inch diagonal color display, includes driver personalization

Entertainment – Chevrolet Infotainment 3 Plus system¹ with 10.2-inch diagonal HD color touch-screen, AM/FM stereo, HD Radio,² Bluetooth[®] audio streaming² for two active devices, wireless Apple CarPlay^{®3} and wireless Android Auto^{™4} compatibility, available Alexa Built-In⁵ voice recognition and In-Vehicle Apps⁶

INTERIOR (CONTINUED)

Mirror – rearview, manual day/night

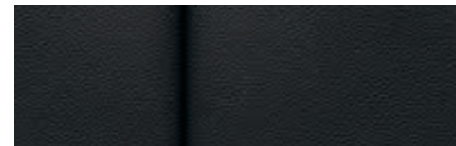
Seating – 8-passenger with front bucket seats and second- and third-row manual-folding 60/40 split-bench seats

Seats – driver 8-way power adjuster with 2-way power lumbar control and front passenger 6-way power adjuster with 2-way power lumbar control

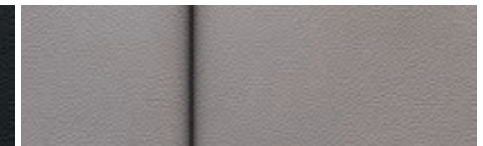
Steering column – manual tilt and telescopic

¹ Chevrolet Infotainment System functionality varies by model. Full functionality requires compatible Bluetooth and smartphone, and USB connectivity for some devices. ² Go to my.chevrolet.com/learnAbout/bluetooth to find out which phones are compatible with the vehicle. Full Bluetooth feature functionality varies by device, model and software version. ³ Vehicle user interface is a product of Apple and its terms and privacy statements apply. Requires compatible iPhone and data plan rates apply. ⁴ Vehicle user interface is a product of Google and its terms and privacy statements apply. Requires the Android Auto app on Google Play and a compatible Android smartphone. Data plan rates apply. You can check which smartphones are compatible at g.co/androidauto/requirements. ⁵ Functionality is subject to limitations and varies by vehicle, infotainment system and location. Select service plan required. Certain Alexa Skills require account linking to use. Visit onstar.com for additional details. ⁶ Requires active service plan and paid AT&T vehicle data plan or compatible device with 3G/4G LTE tethering data plan. Visit onstar.com for details and limitations.

MODELS (CONTINUED)



Jet Black Leather Seating Surfaces² (shown)



Gideon Leather Seating Surfaces²

LT In addition to or replacing LS features, LT includes:

EXTERIOR

Grille – Black with Black inserts and bright chrome accents and center bar

Liftgate – power, programmable, hands-free with Chevrolet emblem projection

INTERIOR

Audio – Bose 9-speaker sound system

Memory settings – recalls two presets for power driver seat

Mirror – rearview, auto-dimming

Seats – driver and front passenger 8-way power adjusters with 2-way power lumbar control

Seats – heated driver and front passenger

Sill plates – front and rear, bright

Universal Home Remote – programmable, includes garage door opener

Wireless charging¹



18" Bright Silver-Painted Aluminum Wheels (PZX)
Standard on LT



20" Painted-Aluminum Wheels with
Machined Face and Argent Metallic Pockets (RD4)
Available on LT

¹ The system wirelessly charges one compatible mobile device. Some phones have built-in wireless charging technology and others require a special adaptor/back cover. To check for phone or other device compatibility, visit my.chevrolet.com/learn or consult your carrier. ² Leather seating surfaces in front and second rows; third row is vinyl-covered.

MODELS (CONTINUED)



Jet Black Perforated Leather Seating Surfaces¹ with Victory Red Stitching



22" Bright Machined High-Gloss Black-Painted Aluminum Wheels (SGF) with Wheel Locks Standard on RST

RST In addition to or replacing LT features, RST includes:

EXTERIOR

Assist steps – Black with gloss Black accents

Chevrolet bowtie emblems – Black

Fascia – front lower, Black with gloss Black accent trim

Grille – Black with Black Ice chrome inserts, accents and center bar

Liftgate appliqué – Black Ice chrome finish

Moldings – gloss Black, window beltline

Roof rails – Black

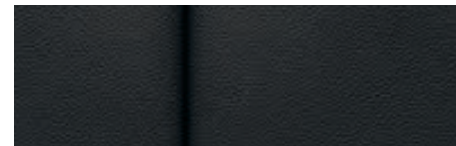
Tires – 22" all-season

INTERIOR

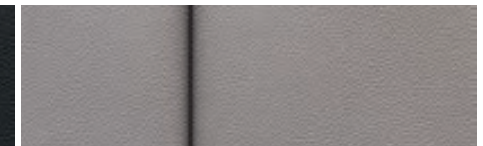
Seats – RST-specific

¹ Leather seating surfaces in front and second rows; third row is vinyl-covered.

MODELS (CONTINUED)



Jet Black Leather Seating Surfaces²



Gideon Leather Seating Surfaces² (shown)

Z71 In addition to or replacing LT features, Z71 includes:

MECHANICAL

Air filter – heavy-duty

Hill Descent Control

Skid plate – front with Galvano finish

Transfer case – active, 2-speed electronic Autotrac,[®] includes neutral position for dinghy towing

EXTERIOR

Assist steps – Black tubular

Chevrolet bowtie emblems – Black

Fascia – front lower, high approach angle, gloss Black

Grille – Black mesh with Black Ice chrome center bar and unique Z71 badging

Liftgate appliqué – Black Ice chrome finish

Moldings – gloss Black, window beltline

Recovery hooks¹ – Red

Roof rails – Black

Tires – 20" all-terrain



20" Machined-Aluminum Wheels
with Technical Gray Pockets (NZU)
Standard on Z71

¹ To avoid the risk of injury, never use recovery hooks to tow a vehicle. See the Owner's Manual for more information. ² Leather seating surfaces in front and second rows; third row is vinyl-covered.

MODELS (CONTINUED)



PREMIER In addition to or replacing LT features, Premier includes:

MECHANICAL

Exhaust – dual system with dual twin polished stainless steel tips

Suspension – Magnetic Ride Control

EXTERIOR

Door handles – chrome with body-color inserts

Fascia – front lower, Black with bright chrome accent trim

Grille – Black with bright chrome inserts and Galvano accents and bright chrome center bar

Mirror caps – chrome

Mirrors – heated, power-adjustable, power-folding with memory and driver-side auto-dimming features, integrated turn signal indicators and puddle lamps

Tires – 20" all-season

INTERIOR

Audio – Bose 10-speaker surround sound system with Centerpoint

Driver Information Center – enhanced, 8-inch diagonal multi-color display, includes analog speedometer and tachometer

Entertainment – Chevrolet Infotainment 3 Premium system¹ with Navigation²; 10.2-inch diagonal HD color touch-screen, AM/FM stereo, HD Radio,³ Bluetooth[®] audio streaming³ for two active devices, wireless Apple CarPlay^{®4} and wireless Android Auto^{™5} compatibility, available Alexa Built-In⁶ enhanced voice recognition, additional memory for In-Vehicle Apps⁷ and Connected Navigation⁸

Front and Rear Park Assist⁹

Lane Change Alert with Side Blind Zone Alert⁹

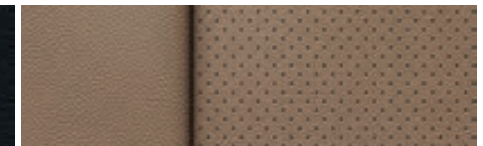
Lane Keep Assist with Lane Departure Warning⁹

Memory settings – recalls two driver presets for power driver seat, outside rearview mirrors, and power tilt and telescopic steering column

Rear Cross Traffic Alert⁹



Jet Black Perforated Leather Seating Surfaces¹⁰



Maple Sugar Perforated Leather Seating Surfaces¹⁰ (shown)



20" Polished-Finish Aluminum Wheels (RD2)
Standard on Premier



22" Polished-Aluminum Wheels (RVA)
with Wheel Locks
Available on Premier

INTERIOR (CONTINUED)

Safety Alert Seat⁹

Seats – driver and front passenger 8-way power adjusters with 4-way power lumbar control

Seats – heated and ventilated driver and front passenger

Seats – heated second-row outboard seating positions

Seats – second-row bucket seats with power-release

Seats – third-row power-folding 60/40 split-bench

Steering column – power tilt and telescopic

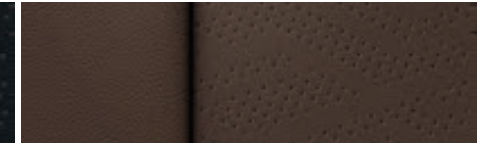
Steering wheel – heated, automatic

¹ Chevrolet Infotainment System functionality varies by model. Full functionality requires compatible Bluetooth and smartphone, and USB connectivity for some devices. ² Map coverage available in the United States, Puerto Rico and Canada. ³ Go to my.chevrolet.com/learnAbout/bluetooth to find out which phones are compatible with the vehicle. Full Bluetooth feature functionality varies by device, model and software version. ⁴ Vehicle user interface is a product of Apple and its terms and privacy statements apply. Requires compatible iPhone and data plan rates apply. ⁵ Vehicle user interface is a product of Google and its terms and privacy statements apply. Requires the Android Auto app on Google Play and a compatible Android smartphone. Data plan rates apply. You can check which smartphones are compatible at g.co/androidauto/requirements. ⁶ Functionality is subject to limitations and varies by vehicle, infotainment system and location. Select service plan required. Certain Alexa Skills require account linking to use. Visit onstar.com for additional details. ⁷ Requires active service plan and paid AT&T vehicle data plan or compatible device with 3G/4G LTE tethering data plan. Visit onstar.com for details and limitations. ⁸ Connected Navigation and Real-time Points of Interest (POI) only available on properly equipped vehicles. Requires paid plan or trial. Map coverage available in the United States, Puerto Rico and Canada. Visit onstar.com for details and limitations. ⁹ Read the vehicle Owner's Manual for important feature limitations and information. ¹⁰ Leather seating surfaces in front and second rows; third row is vinyl-covered.

MODELS (CONTINUED)



Jet Black Perforated Leather Seating Surfaces²



Mocha Perforated Leather Seating Surfaces² (shown)

HIGH COUNTRY In addition to or replacing Premier features, High Country includes:

MECHANICAL

Engine – 6.2L EcoTec3 V8 with Dynamic Fuel Management, Variable Valve Timing (VVT), Direct Injection and stop/start technology

EXTERIOR

Fascia – front lower, Black with Galvano accent

Grille – Black with Galvano inserts and Godric accents and Galvano center bar

Liftgate appliqué – Galvano finish

Mirror caps – body-color

Tires – 22" all-season

INTERIOR

Head-Up Display – 15-inch diagonal multi-color display

Rear Camera Mirror¹ with washer – auto-dimming with full camera display

Rear Pedestrian Alert¹

Sill plates – front and rear, bright with High Country logo

HD Surround Vision¹ – includes HD Rear Vision Camera¹



22" Sterling Silver-Painted Aluminum Wheels with Chrome Inserts (RPT) with Wheel Locks Standard on High Country

¹ Read the vehicle Owner's Manual for important feature limitations and information. ² Leather seating surfaces in front and second rows; third row is vinyl-covered.

SPECIFICATIONS

● STANDARD ○ AVAILABLE – NOT AVAILABLE

	LS	LT	RST	Z71	PREMIER	HIGH COUNTRY
EXTERIOR						
Assist steps: Power-retractable with perimeter lighting	–	–	–	–	○	○
IntelliBeam: Automatic high beam on/off	●	●	●	●	●	●
Mirrors: Heated, power-adjustable, power-folding with memory and driver-side auto-dimming features and puddle lamps (requires available Luxury Package on LT, RST and Z71)	–	○	○	○	●	●
ENGINE/CHASSIS						
Advanced Trailing System: Predeparture checklist, trailer maintenance reminders, trailer security alerts, trailer mileage, Tow/Haul reminder, trailer electrical diagnostics and Trailer Tire Pressure Monitoring System module (requires available Advanced Trailing Package)	○	○	○	○	○	○
Cooling system: Extra-capacity (requires available Max Trailing Package; gas engines only)	○	○	○	○	○	○
Engine: Duramax 3.0L Turbo-Diesel I-6, 277 hp @ 3750 rpm, 460 lb.-ft. of torque @ 1500 rpm; includes engine block heater and upper and lower Active Aero Shutters (late availability)	○	○	○	–	○	○
Exhaust: Single system with single outlet (requires available Duramax 3.0L Turbo-Diesel I-6 engine on Premier and High Country)	●	●	●	●	○	○
Dual system with dual twin polished stainless steel tips (deleted when available Duramax 3.0L Turbo-Diesel I-6 engine is ordered)	–	–	–	–	●	●
Hill Descent Control (requires available 4WD on Premier and High Country)	–	–	–	●	○	○
Hitch Guidance with Hitch View ¹ (requires available Advanced Trailing Package)	○	○	○	○	○	○
Suspension: Magnetic Ride Control (requires available Off-Road Capability Package on Z71)	–	–	–	○	●	●
Four-Corner Air Ride Adaptive (requires available Off-Road Capability Package on Z71; requires available Max Trailing Package on High Country)	–	–	–	○	–	○
Trailer brake controller: Integrated (requires available Advanced Trailing Package)	○	○	○	○	○	○
Trailer Tire Pressure Monitor sensors: Four sensors (requires available Max Trailing Package)	○	○	○	○	○	○
Transfer case: Active, single-speed electronic Autotrac; does not include neutral position for dinghy towing (requires available 4WD)	○	○	○	–	–	–
Active, 2-speed electronic Autotrac; includes neutral position for dinghy towing (requires available Max Trailing Package and 4WD on LS, LT and RST; requires available 4WD on Premier and High Country)	○	○	○	●	○	○
SAFETY & SECURITY						
Automatic Emergency Braking ¹	●	●	●	●	●	●
Enhanced Automatic Emergency Braking ¹ (requires available Adaptive Cruise Control ¹)	–	–	–	–	○	○
Following Distance Indicator ¹	●	●	●	●	●	●
Forward Collision Alert ¹	●	●	●	●	●	●
Front Pedestrian Braking ¹	●	●	●	●	●	●
Lane Change Alert with Side Blind Zone Alert ¹ (requires available Driver Alert Package on LS, LT, RST and Z71)	○	○	○	○	●	●

	LS	LT	RST	Z71	PREMIER	HIGH COUNTRY
SAFETY & SECURITY (CONTINUED)						
Lane Keep Assist with Lane Departure Warning ¹ (requires available Driver Alert Package on LS, LT, RST and Z71)	○	○	○	○	●	●
LATCH system (Lower Anchors and Tethers for Children), for child restraint systems	●	●	●	●	●	●
Park Assist: Rear ¹	●	●	●	●	–	–
Front and Rear ¹ (requires available Driver Alert Package on LS, LT, RST and Z71)	○	○	○	○	●	●
Rear Cross Traffic Alert ¹ (requires available Driver Alert Package on LS, LT, RST and Z71)	○	○	○	○	●	●
Rear Pedestrian Alert ¹ (requires available Luxury Package on LT, RST and Z71; requires available Enhanced Display and Alert Package on Premier)	–	○	○	○	○	●
HD Rear Vision Camera ¹	●	●	●	●	●	–
HD Surround Vision ¹ (includes HD Rear Vision Camera; ¹ requires available Luxury Package on LT, RST and Z71; requires available Enhanced Display and Alert Package on Premier)	–	○	○	○	○	●
Safety Alert Seat ¹	–	–	–	–	●	●
Teen Driver technology	●	●	●	●	●	●
Theft-deterrent system: Unauthorized entry	●	●	●	●	●	●
Trailer Side Blind Zone Alert ¹ (requires available Advanced Trailing Package)	–	–	–	–	○	○
Up to 3 months of OnStar [®] Safety & Security coverage ² ; which includes Automatic Crash Response, Stolen Vehicle Assistance, Emergency Services, Crisis Assist, Roadside Assistance and Turn-by-Turn Navigation ³	●	●	●	●	●	●
INTERIOR						
Adaptive Cruise Control: ¹ With Enhanced Automatic Emergency Braking ¹ (requires available Enhanced Display and Alert Package on Premier)	–	–	–	–	○	○
Console: Power Sliding Center Console with drawer, secure storage, manual-sliding armrest; USB ports ⁴ in center console are removed when Power Sliding Center Console is ordered (requires available Luxury Package and second-row bucket seats on LT, RST and Z71; requires available Premium Package on Premier)	–	○	○	○	○	○
Driver Information Center: 4.2-inch diagonal color display, includes driver personalization Enhanced, 8-inch diagonal multi-color display, includes analog speedometer and tachometer (requires available Off-Road Capability Package on Z71)	●	●	●	●	–	–
Head-Up Display: 15-inch diagonal multi-color display (requires available Enhanced Display and Alert Package on Premier)	–	–	–	–	○	●
Memory settings: Recalls two presets for power driver seat	–	●	●	●	–	–
Recalls two presets for power driver seat, outside rearview mirrors, and power tilt and telescopic steering column (requires available Luxury Package on LT, RST and Z71)	–	○	○	○	●	●
Rear Camera Mirror ¹ with washer: Auto-dimming with full camera display (requires available Enhanced Display and Alert Package on Premier)	–	–	–	–	○	●
Steering column: Power tilt and telescopic (requires available Luxury Package on LT, RST and Z71)	–	○	○	○	●	●
Steering wheel: Heated, automatic (requires available Luxury Package on LT, RST and Z71)	–	○	○	○	●	●
Sunroof: Panoramic power, dual-pane with power sunshade	–	○	○	○	○	○

¹ Read the vehicle Owner's Manual for important feature limitations and information. ² When you select a monthly plan within 30 days of activating your 1-month trial, you'll receive the first 2 months of the plan you select at no additional charge when you associate an approved payment method on file to your account and authorize recurring payments for your service plan. The amount and frequency of each recurring payment is based upon the service(s) and payment interval(s) you select from the options provided. After the trial expires, OnStar will automatically bill your payment method monthly at then-current standard monthly rates. Plans containing 4G LTE data will be billed every 30 days by AT&T. You may cancel at any time by pushing your blue OnStar button or calling 1-888-466-7827. May not be combined with other offers or retroactively applied. Offer subject to change. ³ Advisor-based Turn-by-Turn Navigation is subject to User Terms and limitations, and varies by vehicle model. Map coverage available in the United States, Puerto Rico and Canada. Availability subject to change. ⁴ Not compatible with all devices.

SPECIFICATIONS (CONTINUED)

● STANDARD ○ AVAILABLE – NOT AVAILABLE

	LS	LT	RST	Z71	PREMIER	HIGH COUNTRY
SEATING						
Front 40/20/40 split-bench (deletes driver inboard seat-mounted side-impact airbag; center floor console and two USB ports ²)	○	–	–	–	–	–
Second-row bucket seats, manual-release	–	○	–	○	–	–
Second-row bucket seats, power-release (requires available LT Signature Package or Luxury Package on LT; requires available Luxury Package on RST; requires available Z71 Signature Package or Luxury Package on Z71)	–	○	○	○	●	●
Second-row 60/40 split-folding bench seat, power-release (requires available Luxury Package on LT, RST and Z71; requires Jet Black interior color on High Country)	–	○	○	○	○	○
Second-row outboard seats, heated (requires available Luxury Package on LT, RST and Z71)	–	○	○	○	●	●
Third-row power-folding 60/40 split-bench seat (requires available Luxury Package on LT, RST and Z71)	–	○	○	○	●	●
ENTERTAINMENT						
Chevrolet Infotainment 3 Plus system ³ with 10.2-inch diagonal HD color touch-screen, AM/FM stereo, HD Radio ⁶ , Bluetooth [®] audio streaming ⁴ for two active devices, wireless Apple CarPlay ^{®5} and wireless Android Auto ^{™6} compatibility, available Alexa Built-In ⁷ , voice recognition and In-Vehicle Apps ⁸	●	●	●	●	–	–
Chevrolet Infotainment 3 Premium system ⁹ with Navigation ⁹ ; includes features listed above, enhanced voice recognition, additional memory for In-Vehicle Apps ⁸ and Connected Navigation ¹⁰ (requires available Rear Media and Nav Package on LT, RST and Z71)	–	○	○	○	●	●
Rear-Seat Media System: Dual rear seat-mounted 12.6-inch diagonal LCD HD color touch-screens, Wi-Fi ^{®11} wireless projection capability, two 2-channel wireless infrared digital headphones, and two HDMI ports on rear of center console; compatible with Bluetooth headphones (requires available Rear Media and Nav Package on LT, RST and Z71)	–	○	○	○	○	○
Available 4G LTE Wi-Fi ¹¹ Hotspot for up to seven devices, includes 1 month or 3 GB of data (whichever comes first)	○	○	○	○	○	○
Chevrolet Connected Access ¹² with 10 years of standard connectivity, which currently enables features such as Vehicle Diagnostics and Dealer Maintenance Notification	●	●	●	●	●	●
PACKAGES AND SPECIAL EDITIONS						
Advanced Trailing Package	○	○	○	○	○	○
Hitch Guidance with Hitch View ¹³ ; integrated trailer brake controller and Advanced Trailing System; includes Trailer Side Blind Zone Alert ¹³ on Premier and High Country (requires available Max Trailing Package)						

	LS	LT	RST	Z71	PREMIER	HIGH COUNTRY
PACKAGES AND SPECIAL EDITIONS (CONTINUED)						
Max Trailing Package	○	○	○	○	○	○
Advanced Trailing Package and extra-capacity cooling system; includes Autotrac 2-speed active transfer case on LS, LT and RST 4WD models (extra-capacity cooling system not included with available Duramax 3.0L Turbo-Diesel I-6 engine)						
Driver Alert Package ¹³	○	○	○	○	–	–
Lane Change Alert with Side Blind Zone Alert, Lane Keep Assist with Lane Departure Warning, Rear Cross Traffic Alert, and Front and Rear Park Assist (requires available Luxury Package on LT, RST and Z71)						
Luxury Package	–	○	○	○	–	–
Driver Alert Package, HD Surround Vision ¹³ , Rear Pedestrian Alert ¹³ , memory settings, outside heated power-adjustable power-folding mirrors with memory includes driver-side auto-dimming feature and integrated turn signal indicators, power tilt and telescopic steering column, automatic heated steering wheel, second-row outboard heated seats, second-row 60/40 split-folding bench seat with power release and third-row power-folding 60/40 split-bench seat						
Rear Media and Nav Package	–	○	○	○	–	–
Rear-Seat Media System, Chevrolet Infotainment 3 Premium system ³ with Navigation ⁹ and additional memory for In-Vehicle Apps ⁸						
LT Signature Package	–	○	–	–	–	–
Luxury Package, Max Trailing Package, 20" painted-aluminum wheels with machined face and Argent Metallic pockets (RD4), 20" all-season tires and panoramic power sunroof						
Texas Edition	–	○	–	–	○	–
Texas Edition badging; includes 22" polished-aluminum wheels (RVA) and 22" all-season tires on Premier (requires available LT Signature Package or Luxury Package on LT)						
Off-Road Capability Package	–	–	–	○	–	–
Magnetic Ride Control, Four-Corner Air Ride Adaptive Suspension and enhanced Driver Information Center with 8-inch diagonal multi-color display (requires available Luxury Package and Max Trailing Package)						
Z71 Off-Road Package	–	–	–	○	–	–
Luxury Package, Max Trailing Package and Off-Road Capability Package						
Enhanced Display and Alert Package	–	–	–	–	○	–
HD Surround Vision ¹³ , Head-Up Display, Rear Camera Mirror ¹³ with washer and Rear Pedestrian Alert ¹³						
Premium Package	–	–	–	–	○	○
Max Trailing Package, panoramic power sunroof and Adaptive Cruise Control ¹³ ; includes Enhanced Display and Alert Package on Premier; includes power-retractable assist steps with perimeter lighting on High Country						
High Country Deluxe	–	–	–	–	–	○
Max Trailing Package, Four-Corner Air Ride Adaptive Suspension, Adaptive Cruise Control ¹³ , panoramic power sunroof and power-retractable assist steps with perimeter lighting (requires available Power Sliding Center Console)						

1 A NOTE ON CHILD SAFETY: Always use seat belts and the correct child restraint for your child's age and size, even with airbags. Even in vehicles equipped with the Passenger Sensing System, children are safer when properly secured in a rear seat in the appropriate infant, child or booster seat. Never place a rear-facing infant restraint in the front seat of any vehicle equipped with an active frontal airbag. See your vehicle Owner's Manual and the child safety seat instructions for more safety information. **2** Not compatible with all devices. **3** Chevrolet Infotainment System functionality varies by model. Full functionality requires compatible Bluetooth and smartphone, and USB connectivity for some devices. **4** Go to my.chevrolet.com/learnAbout/bluetooth to find out which phones are compatible with the vehicle. Full Bluetooth feature functionality varies by device, model and software version. **5** Vehicle user interface is a product of Apple and its terms and privacy statements apply. Requires compatible iPhone and data plan rates apply. **6** Vehicle user interface is a product of Google and its terms and privacy statements apply. Requires the Android Auto app on Google Play and a compatible Android smartphone. Data plan rates apply. You can check which smartphones are compatible at g.co/androidauto/requirements. **7** Functionality is subject to limitations and varies by vehicle, infotainment system and location. Select service plan required. Certain Alexa Skills require account linking to use. Visit onstar.com for additional details. **8** Requires active service plan and paid AT&T vehicle data plan or compatible device with 3G/4G LTE tethering data plan. Visit onstar.com for details and limitations. **9** Map coverage available in the United States, Puerto Rico and Canada. **10** Connected Navigation and Real-time Points of Interest (POI) only available on properly equipped vehicles. Requires paid plan or trial. Map coverage available in the United States, Puerto Rico and Canada. Visit onstar.com for details and limitations. **11** Service varies with conditions and location. Requires active service and paid AT&T data plan. Visit onstar.com for details and limitations. Availability subject to change. **12** Standard connectivity available only to original purchaser for 10 years. Connected Access services are subject to change. Does not include emergency or security services. Diagnostic capabilities vary by model and service plan. Message and data rates may apply. Requires contact method on file and enrollment to receive alerts. Not all issues will deliver alerts. Visit onstar.com for details and limitations. **13** Read the vehicle Owner's Manual for important feature limitations and information.

DIMENSIONS

Length	225.7"
Wheelbase	134.1"
Height	75.7"

Width	81.1"
Front Track	68.5"
Rear Track	68.3"

Head Room (front/second row/third row)	42.3"/38.9"/38.2"
Head Room with sunroof (front/second row/third row)	40.4"/37.5"/38.2"
Leg Room (front/second row/third row)	44.5"/42.0"/36.7"
Shoulder Room (front/second row/third row)	66.0"/64.8"/62.8"
Hip Room (front/second row/third row)	61.5"/61.3"/49.4"

MAXIMUM CAPACITIES

Fuel tank (approximate)	28 gallons
Maximum trailer weight ratings ¹	5.3L 2WD: 7,800 lbs. 5.3L 2WD: 8,300 lbs. with Max Trailering Package 5.3L 4WD: 7,600 lbs. 5.3L 4WD: 8,100 lbs. with Max Trailering Package 6.2L 2WD: 7,700 lbs. 6.2L 2WD: 8,200 lbs. with Max Trailering Package 6.2L 4WD: 7,400 lbs. 6.2L 4WD: 7,900 lbs. with Max Trailering Package 3.0L ² 2WD: 8,000 lbs. 3.0L ² 2WD: 8,000 lbs. with Max Trailering Package 3.0L ² 4WD: 7,800 lbs. 3.0L ² 4WD: 7,800 lbs. with Max Trailering Package

Seating	LS: seats 8, option for 9 LT, RST and Z71: seats 8, option for 7 Premier and High Country: seats 7, option for 8
Cargo volume ³	Behind third-row seat: 41.5 cubic feet With third-row seat folded: 93.8 cubic feet With second- and third-row seats folded: 144.7 cubic feet

EPA-ESTIMATED FUEL ECONOMY

5.3L 2WD	16 MPG city/20 highway/18 combined
5.3L 4WD	15 MPG city/19 highway/17 combined
6.2L 2WD	15 MPG city/20 highway/17 combined
6.2L 4WD	14 MPG city/19 highway/16 combined
3.0L 2WD	Fuel economy estimates not available at time of printing
3.0L 4WD	Fuel economy estimates not available at time of printing

¹ Before you buy a vehicle or use it for trailering, carefully review the Trailering section of the Owner's Manual. The weight of passengers, cargo and options or accessories may reduce the amount you can tow. ² Late availability. ³ Cargo and load capacity limited by weight and distribution.



Enroll. It's quick, it's easy and there is no cost to join. You will automatically receive points just for enrolling!¹ To enroll, visit mychevroletrewards.com.

Earn. Earn points on eligible new vehicle leases or purchases, which can be redeemed toward accessories;² vehicle service and more. Plus, get points for paid service;³ select OnStar[®] and Connected Services plans;⁴ and many others.

Enjoy. Use points toward eligible accessories;² paid service, eligible new vehicles⁵ and more. It's our way of saying thanks!



First oil change is covered⁶ Experience Chevrolet Complete Care, a comprehensive coverage, limited warranty and protection program that comes standard with every new 2021 Chevrolet Suburban lease and purchase.

Simply, it is designed around you, to make it easy to help keep your Chevrolet like new – and give you the confidence you deserve. For more information, visit chevrolet.com/complete-care.

NEW VEHICLE LIMITED WARRANTY

Chevrolet will warrant each 2021 Suburban with:

3-year/36,000-mile⁷ Bumper-to-Bumper Limited Warranty.

6 years/100,000 miles⁷ of Rust-Through Protection.

5-year/60,000-mile⁷ Powertrain Limited Warranty.

5-year/100,000-mile⁷ Diesel Limited Warranty (when equipped with a Duramax 3.0L Turbo-Diesel I-6 engine).

5 years/60,000 miles⁷ of Roadside Assistance⁸ and Courtesy Transportation.

¹ Must be 18 years or older. Points may be earned and redeemed only at participating GM entities, dealers or third party retailers in the United States (excluding Puerto Rico, the U.S. Virgin Islands or Guam). Points are not earned on taxes or certain fees, and expire 5 years from when points are earned. Some restrictions apply. For more information, please view full program Terms & Conditions. ² Members may use the voucher on eligible Chevrolet, Buick, GMC and Cadillac Accessories purchased through a participating dealership. Voucher must be used by expiration date noted. Any unused amount of the voucher will be forfeited. ³ Excludes taxes, fees and body shop repair orders. It could take up to 15 days for points to post to your account. ⁴ Connected vehicle services vary by vehicle model and require working electrical system, cell reception and GPS signal. Requires active service plan. OnStar links to emergency services. Visit onstar.com for details and limitations. ⁵ Not compatible with some other offers, including the GM Employee Discount programs. Excludes 2020 Chevrolet Corvette. Dealer contribution may affect final consumer cost. ⁶ Maintenance visit must occur within first year of vehicle delivery. Service visit consists of ACDelco dexos1™ Full Synthetic Oil and Filter Change/Tire Rotation/MPVI. Does not include air filters. See participating dealer for other restrictions and complete details. ⁷ Whichever comes first. See dealer for details. ⁸ Roadside service provided by Allstate Roadside Services. Limitations apply.

IMPORTANT INFORMATION

Chevrolet Owner Center (my.chevrolet.com). Everything you need to know. Anything you need to do. Your Chevrolet Owner Center makes it easy. Create your account today to get the most out of your new vehicle. Get special alerts and offers, schedule service, review your maintenance schedule, and view how-to videos specifically for your vehicle. All online, anytime. Visit the Owner Center today to register or take a tour.

Engines. Chevrolet products are equipped with engines produced by GM Global Propulsion Systems or other suppliers to GM worldwide. The engines in Chevrolet products may also be used in other GM makes and models.

Assembly. Chevrolet vehicles and their components are assembled or produced by different operating units of General Motors, its subsidiaries or suppliers to GM worldwide. We sometimes find it necessary to produce Chevrolet vehicles with different or differently sourced components than originally scheduled. Since some options may be unavailable when your vehicle is assembled, we suggest you verify that your vehicle includes the equipment you ordered and that, if there were changes, they are acceptable to you.

Chevrolet Connected Services and OnStar. Connected vehicle services vary by vehicle model and require an active service plan, working electrical system, cell reception and GPS signal. OnStar links to emergency services. Visit onstar.com for details and limitations.

A note on child safety. Always use seat belts and the correct child restraint for your child's age and size, even with airbags. Even in vehicles equipped with the Passenger Sensing System, children are safer when properly secured in a rear seat in the appropriate infant, child or booster seat. Never place a rear-facing infant restraint in the front seat of any vehicle equipped with an active frontal airbag. See your vehicle Owner's Manual and the child safety seat instructions for more safety information.

Important words about this catalog. We have tried to make this catalog comprehensive and factual. We reserve the right, however, to make changes at any time, without notice, in prices, colors, materials, equipment, specifications, models and availability. Specifications, dimensions, measurements, ratings and other numbers in this catalog

and other printed materials provided at the dealership or affixed to vehicles are approximations based on design and engineering drawings, prototypes and laboratory tests. Your vehicle may differ due to variations in manufacture and equipment. Since some information may have been updated since the time of printing, please check with your Chevrolet dealer for complete details. Chevrolet reserves the right to lengthen or shorten the model year for any product for any reason or to start and end model years at different times. Certain vehicle features may lose their usefulness over time due to obsolescence from technological changes. Unless otherwise noted, all claims based on GM Large SUV segment and latest available competitive information. Excludes other GM vehicles.

Fleet orders. Some standard content may be deleted on fleet orders. See dealer for details.

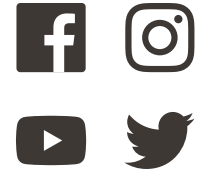
Chevrolet ownership experience. Chevrolet is committed to enhancing the vehicle shopping and ownership experience through a wide array of programs. Visit chevrolet.com to build and price, find a vehicle, request a quote, compare vehicles, find financial tools or track your vehicle order. You'll also find information about 24-hour Roadside Assistance, Courtesy Transportation, Customer Assistance, GM Mobility, safety and current incentives.

Chevrolet.com/safety. Chevrolet is committed to helping keep you and your family safe – from the start of your journey to your destination. That's why Chevrolet vehicles offer standard and available safety and security features to help give you peace of mind.

GMmobility.com (1-800-323-9935). GM MobilitySM offers financial assistance for eligible adaptive equipment to make automotive travel easier for persons with disabilities or special transportation needs. To learn more about special GM Mobility offers, visit gmmobility.com.

The BuyPower Card. The Chevrolet BuyPower Card – Every purchase you make with the BuyPower Card from Capital One* helps you earn toward an eligible new Chevrolet, Buick, GMC or Cadillac vehicle. There's no limit on the amount you can earn or redeem, and your Earnings don't expire. Visit chevroletbuypowercard.com/catalogs.

* Capital One, N.A. is the issuer of the BuyPower Card. General Motors ("GM") is responsible for the operation and administration of the Earnings program.



GM, the GM logo, Chevrolet, the Chevrolet logo, and the slogans, emblems, vehicle model names, vehicle body designs and other marks appearing in this catalog are the trademarks and/or service marks of General Motors, its subsidiaries, affiliates or licensors. ©2020 OnStar LLC. All rights reserved. Sirius, XM, SiriusXM and all related marks and logos are trademarks of Sirius XM Radio Inc. Amazon, Alexa and all related marks are trademarks of Amazon.com, Inc. or its affiliates. The Bluetooth word mark is a registered trademark owned by Bluetooth SIG, Inc., and any use of such mark by Chevrolet is under license. Bose and Centerpoint are registered trademarks of the Bose Corp.

©2020 General Motors. All rights reserved. August 2020

FIND NEW ROADS™

CHEVROLET.COM

